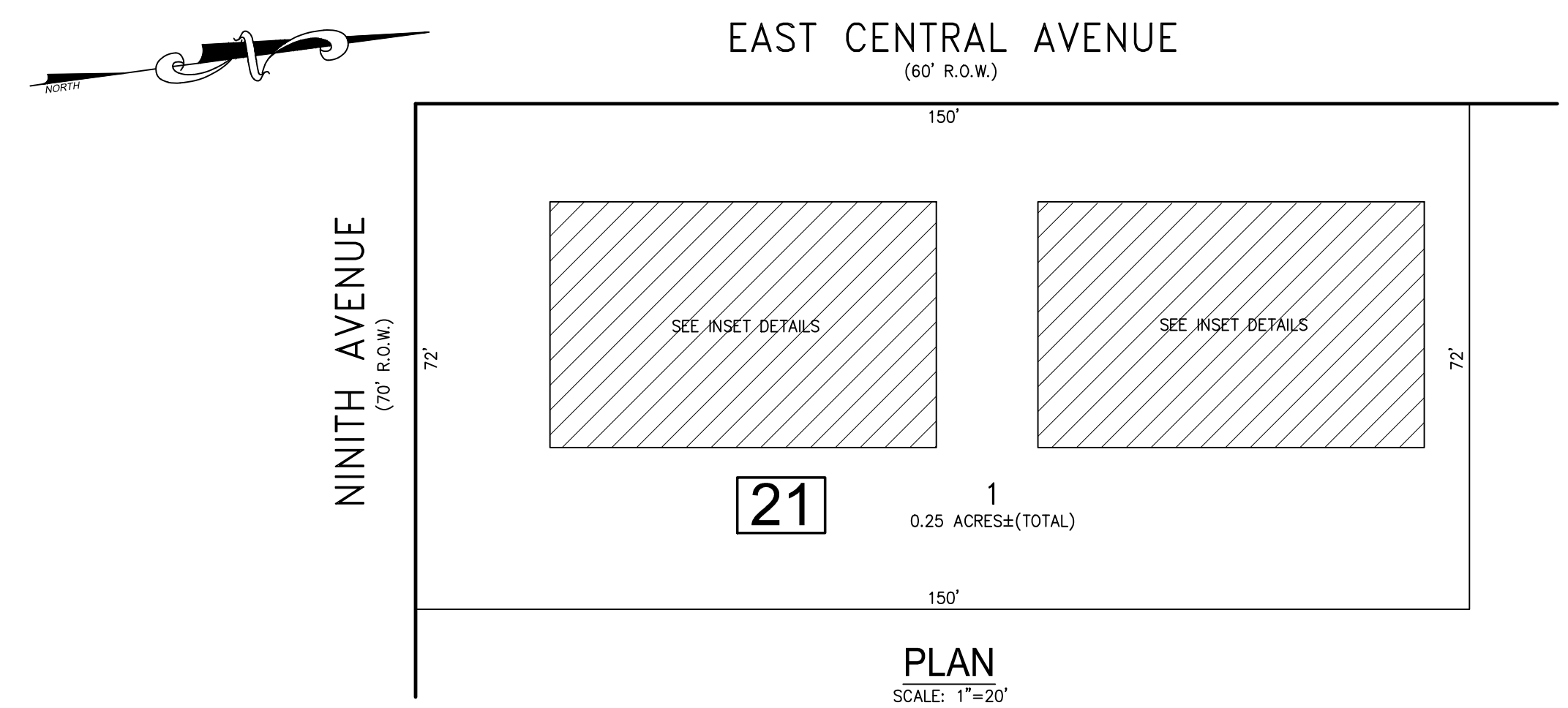


REVISIONS		
DATE	NAME	NO.

**NOTE:**  
THIS SHEET HAS BEEN DRAWN USING COMPUTER AIDED DRAFTING/DESIGN (CAD/D) AND COORDINATE GEOMETRY (COGO).

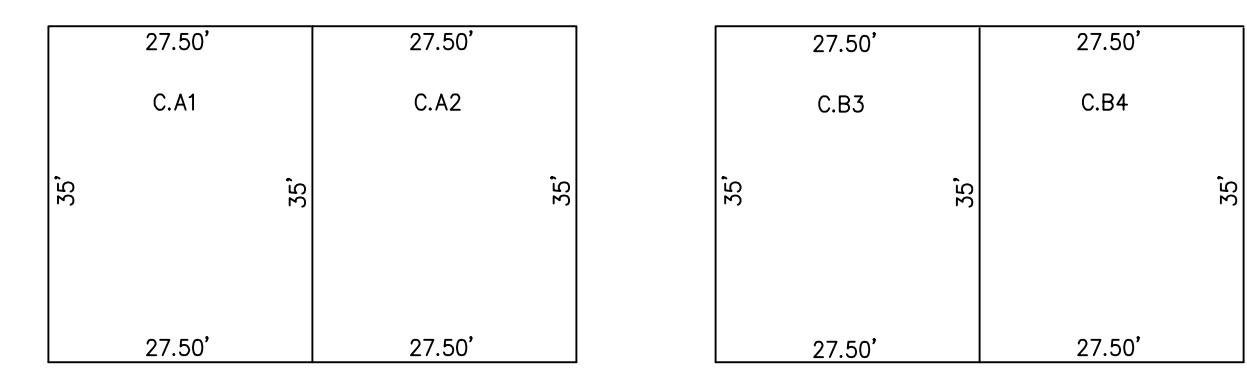


**21**  
1  
0.25 ACRES±(TOTAL)

**PLAN**  
SCALE: 1"=20'

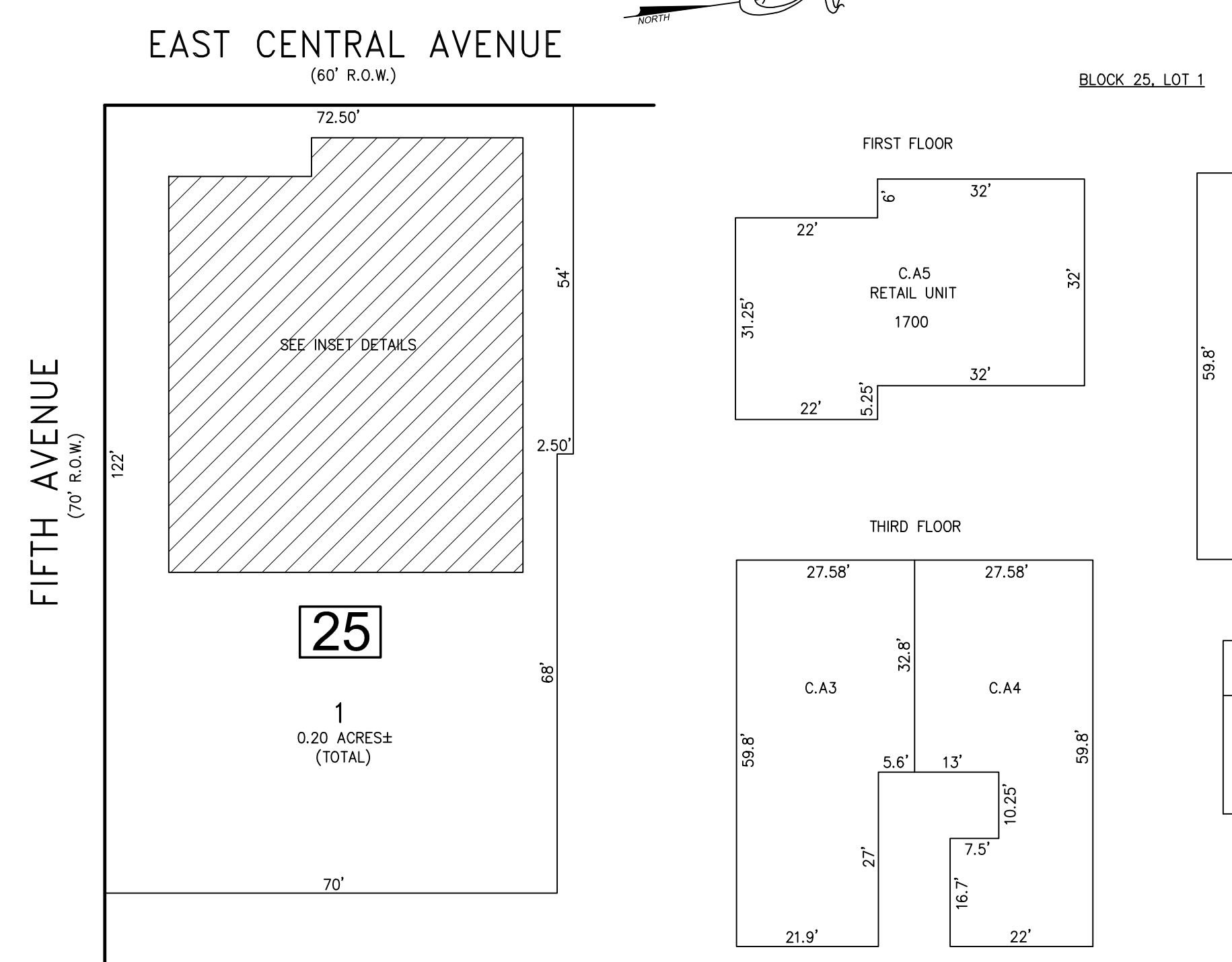
BLOCK 25, LOT 1

BLOCK NUMBER	LOT NUMBER	CONDO QUALIFIER	SQUARE FOOTAGE
21	1	C.A1	2248 SF.
		C.A2	2248 SF.
		C.B3	2248 SF.
		C.B4	2248 SF.



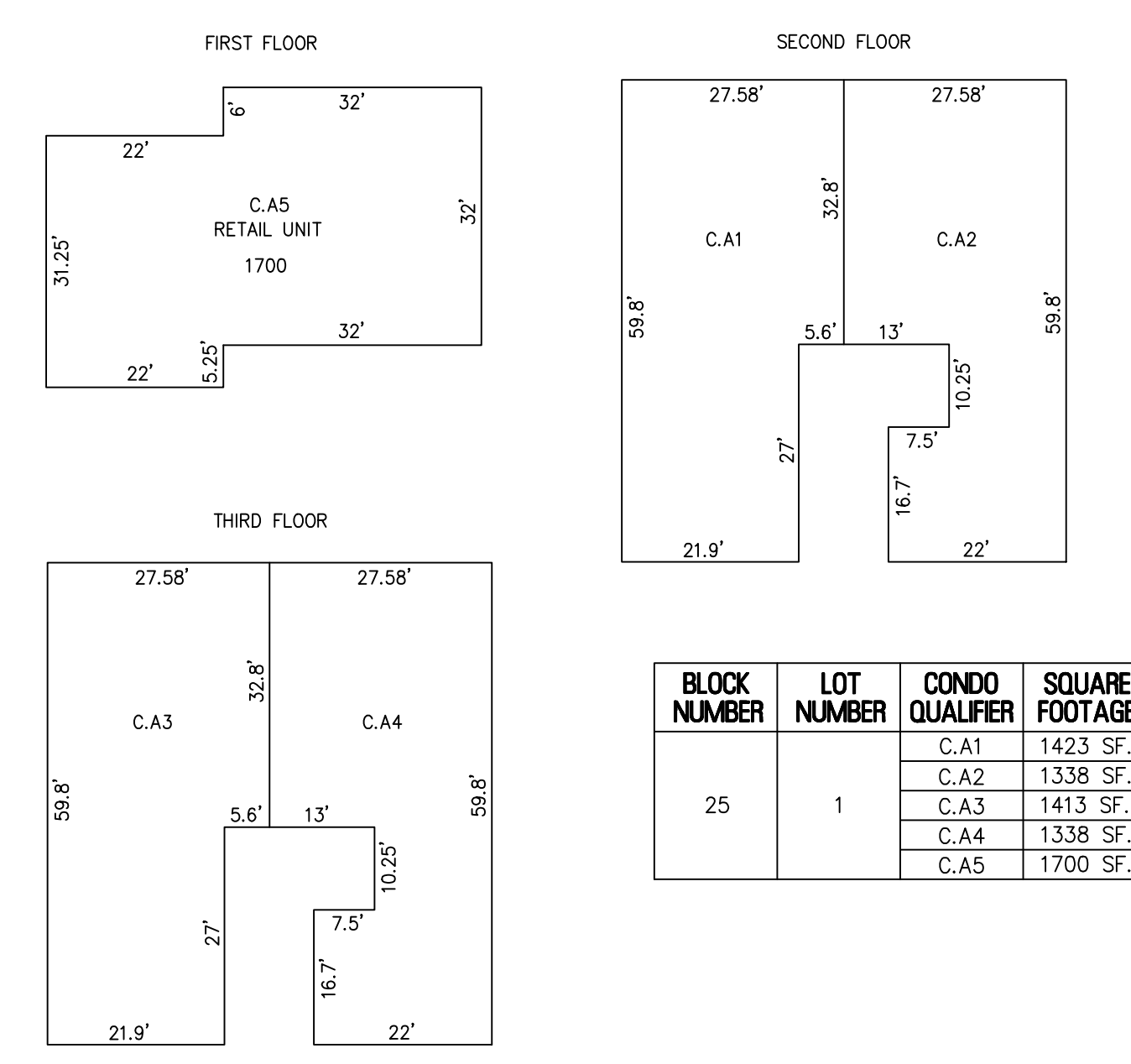
**DETAILS**  
SCALE: 1"=20'

**BLOCK 21, LOT 1**  
**SOUTHERN TIDE TOWNHOMES**



**25**  
1  
0.20 ACRES±(TOTAL)

**PLAN**  
SCALE: 1"=20'



**DETAILS**  
SCALE: 1"=20'

BLOCK 25, LOT 1

BLOCK NUMBER	LOT NUMBER	CONDO QUALIFIER	SQUARE FOOTAGE
25	1	C.A1	1423 SF.
		C.A2	1338 SF.
		C.A3	1413 SF.
		C.A4	1338 SF.
		C.A5	1700 SF.

**BLOCK 25, LOT 1**  
**410 CENTRAL TOWNHOMES, A CONDOMINIUM**

BLOCK 22, LOT 1  
BLOCK 25, LOT 1  
SEE SHEET 5

**TAX MAP**  
**BOROUGH OF SEASIDE PARK**  
OCEAN COUNTY NEW JERSEY  
SCALE: NOTED DATE: 11-29-2023  
CHARLES E. ADAMSON N.J.P.L.S. LIC. NO. 42627  
**REMINGTON & VERNICK ENGINEERS**  
9 ALLEN STREET, TOMS RIVER, NJ 08753  
(732) 286-9220, FAX (732) 505-8416, WEB SITE ADDRESS: WWW.RVE.COM  
Certificate of Authorization: 24 GA 28003300  
*Excellence • Innovation • Service*